

HOUSING OF ESTATE LABOUR*

B. D. FAY

The problem of finding suitable sites on steep up-country estates on which to build extra line accommodation, where necessary, for one's present labour must have exercised the minds of numerous Superintendents.

Apart from the undesirability of cutting out valuable tea, when estates have no suitable wasteland on which to build, the lack of sufficient water, particularly in Uva, may make it impossible to find any site that will meet the demand, so the only alternative to my mind is to build up. This can be done by converting existing single line room sets into two storey buildings which will amplify an estate's line accommodation for its present labour force up to 100 per cent of its existing single line rooms, thus eliminating the necessity of finding new sites or fresh water supplies.

A sketch of the plan I have in mind with details of construction is shown overleaf, from which it will be seen that an existing ground floor room is to be extended to include the verandah thus giving a room 10 feet x 19 feet or 12 feet x 17 feet, preferably the former, to reduce the ceiling span. Above this a room 10 feet x 12 feet is constructed and the balance of the space is utilized for a verandah exactly over and equivalent in dimensions to the original ground floor verandah. Access to the upper floor is given by an inside staircase from the lower enlarged room thus providing two intercommunicating rooms, ideal for large families. A suitable kitchen could be erected along the back of the building, to complete the ensemble.

* The Institute does not necessarily endorse the views expressed in papers contributed by others than members of the staff.

The above arrangement doubles one's single room line accommodation without increasing sites, water or roofing requirements, the latter being of vital consideration in these days of expensive roofing materials.

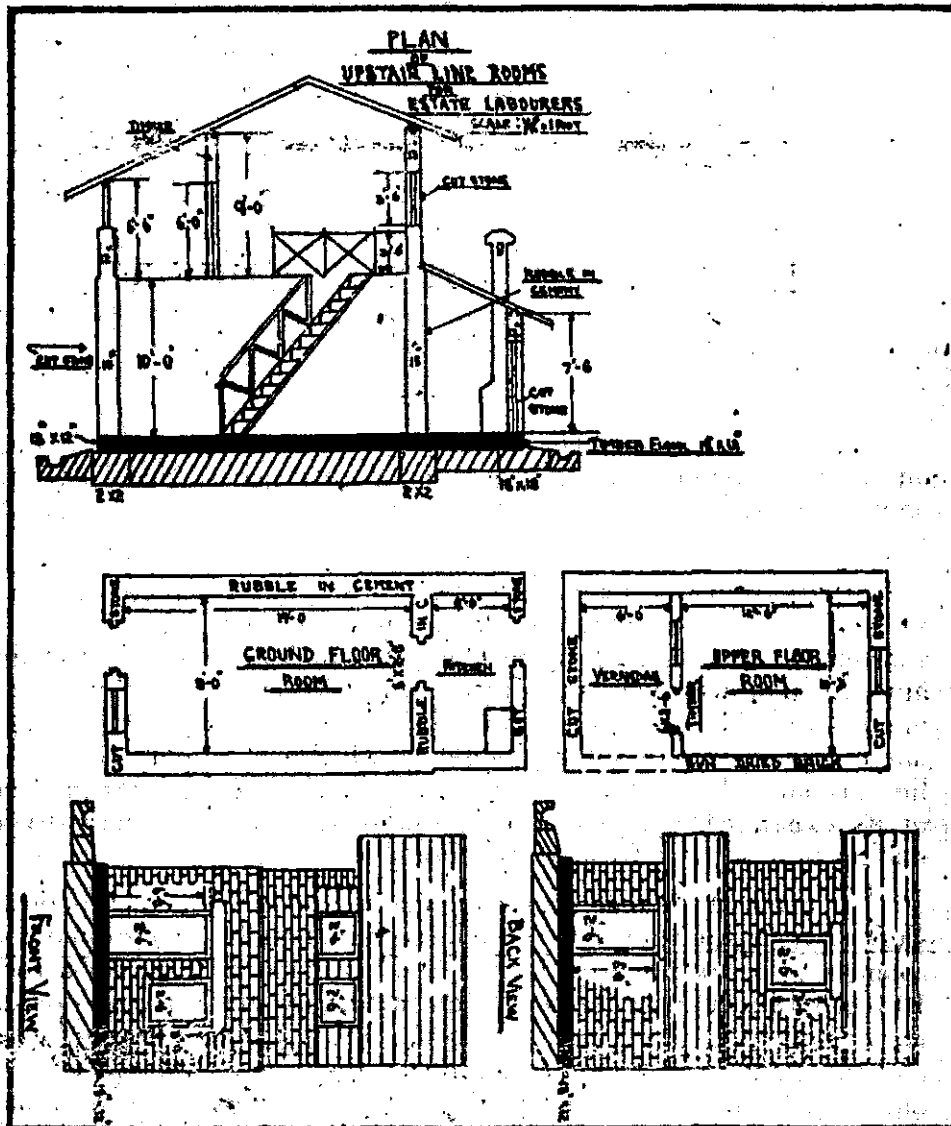


Fig. 1

This suggestion has been laid before the Inspecting Medical Officer and the Director of Medical and Sanitary Services both of whom have no objection to the arrangement, and any of my labour to whom I have spoken are enthusiastic about it. The plan shown in Fig. 1 has since been approved for this estate by the Director of Medical and Sanitary Services.